

## WHAT TO DO . . .

- ✦ Fishing
- ✦ Swimming
- ✦ Snorkelling
- ✦ Crabbing
- ✦ Boating
- ✦ Canoeing
- ✦ Water Skiing
- ✦ Walking Trails
- ✦ Tennis
- ✦ Sailing
- ✦ Day trip to Innes National Park
- ✦ Or just Relax and do Nothing . . .



# Pt Vincent

## CARAVAN PARK & SEASIDE CABINS

08 8853 7011

*Right on the water's edge*



Contact Mark & Sharon Haydon

Minlacowie Road (see map)

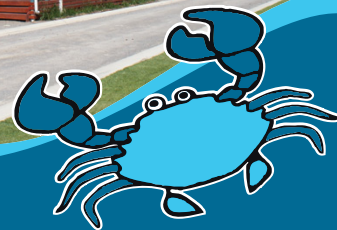
PO Box 66

PORT VINCENT SA 5581

Phone: 08 8853 7011 - Fax: 08 8853 7355

Email: [stay@portvincentcaravanpark.com.au](mailto:stay@portvincentcaravanpark.com.au)

Web: [www.portvincentcaravanpark.com.au](http://www.portvincentcaravanpark.com.au)





Port Vincent Caravan Park and Seaside Cabins has budget, deluxe and spa cabin accommodation along with beach front powered sites, making it an ideal central location where you can base yourself for exploring South Australia's Yorke Peninsula.

The township of Port Vincent is situated overlooking a lovely bay on the eastern coast of central Yorke Peninsula, just 196 kilometres from Adelaide by road or 47 kilometres by water from Outer Harbour.

Port Vincent Caravan Park and Seaside Cabins is located on the beachfront in a quiet location in the town, and only a three minute walk to the town's shopping centre.

But most importantly, our location is adjacent an excellent, safe beach for children.

So come, stay, enjoy!

*Come & Relax  
by the seaside!*

## CABINS

Just pack your bags and get yourself to Port Vincent – we'll take care of the rest by providing you with a cabin by the sea to meet your needs and budget.

### BEACHFRONT SPA CABIN

Absolute beach front with luxurious modern interior and stunning ocean views. All modern conveniences include spa bath, dish washer and reverse cycle air conditioning. All bedding supplied. Sleeps 4.

### DELUXE SEAVIEW CABINS

Spacious, two bedroom, fully self contained cabins. Open plain living, dining and kitchen with reverse cycle air conditioning. Modern interior and an outside deck with ocean views. All bedding supplied. Sleeps 4-6.

### BUDGET ENSUITE CABINS

Fully self contained with kitchen and bathroom facilities. Double bed in main room and some with bunk bed in adjacent room. Reverse cycle air conditioning. Bedding hire available. Sleeps 2-6.

### BUDGET CABINS

Situated on the beach front with a fully self contained kitchen. One room cabin with one double bed and one bunk bed. No bathroom facilities, please use the park amenities. Bedding hire available. Sleeps 2-4.

## PARK FEATURES

- ◆ Spa, Deluxe & Budget Cabins
- ◆ Pet friendly cabins by arrangement
- ◆ Lawned powered sites
- ◆ Sparkling amenities
- ◆ Playground
- ◆ Fish Cleaning Area
- ◆ Laundry
- ◆ BBQ area
- ◆ Linen hire (budget cabins)
- ◆ Drinks, gas, ice, bait & tackle
- ◆ Dogs allowed on leash all year round by arrangement

